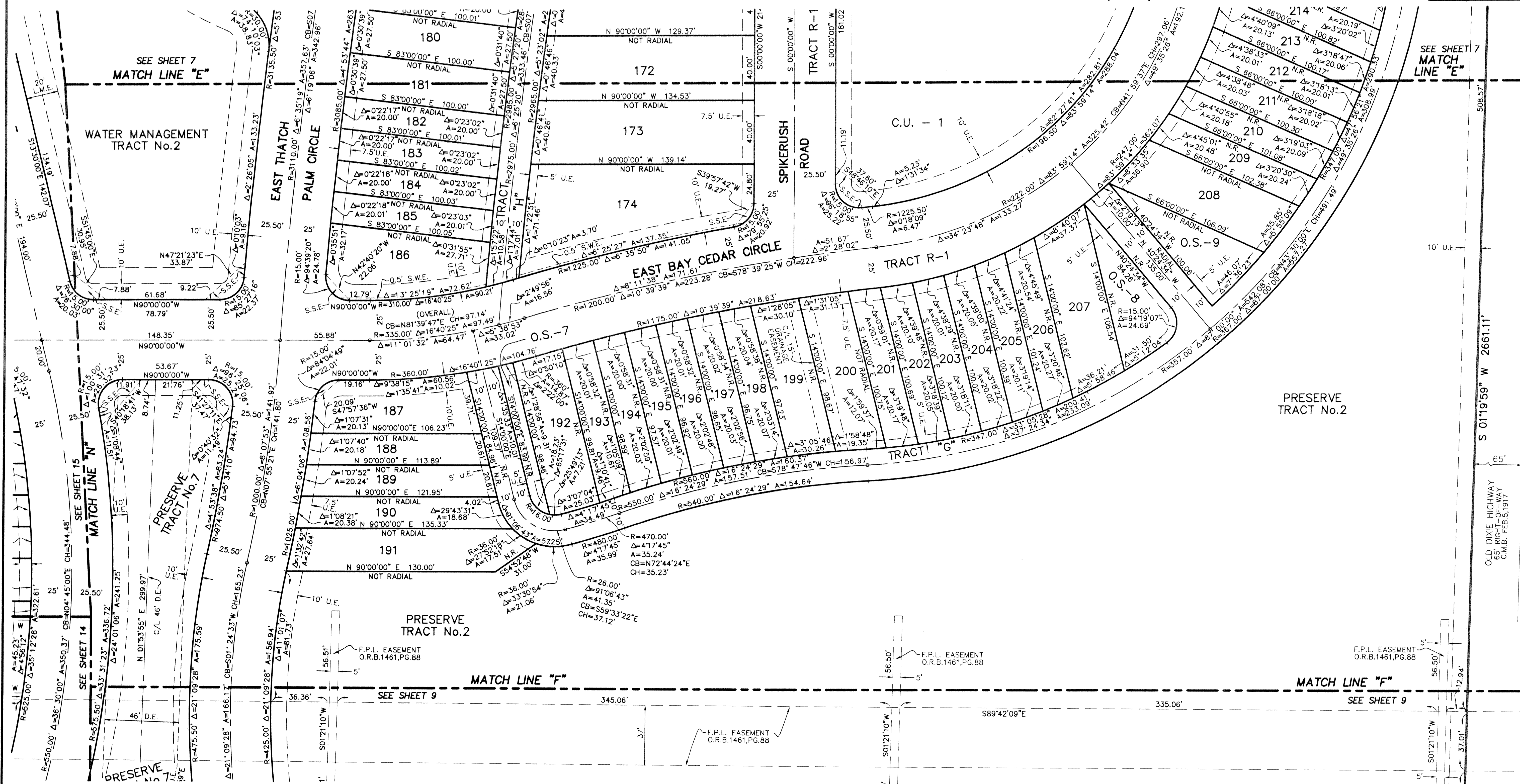
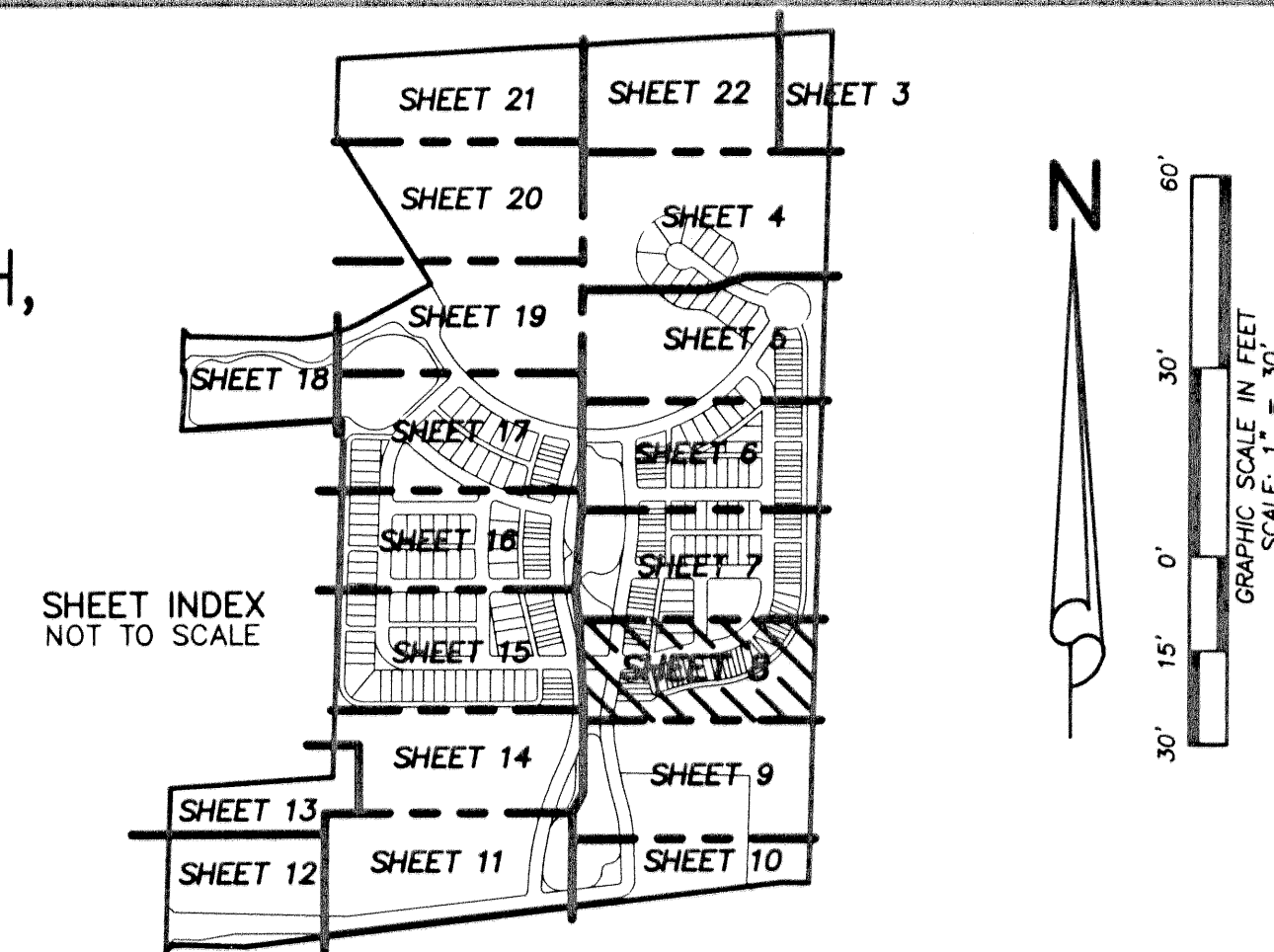


BOTANICA

BEING A PARCEL OF LAND IN SECTION 12 AND 13, TOWNSHIP 41 SOUTH,
RANGE 42 EAST, TOWN OF JUPITER, PALM BEACH COUNTY, FLORIDA.

JANUARY, 2003 SHEET 8 OF 22



LIDBERG LAND SURVEYING, INC.
675 West Indiantown Road, Suite 200,
Jupiter, Florida 33458 TEL. 561-746-8454

CAD	K:\AUTOCAD\98-150\1508-306.DWG		
REF	K:\AUTOCAD\		
FLD	B. D.	FB. 000	PG. 00
OFF	W. D. J.	000	00
CKD	W. D. J.	SHEET 8 OF 22	JOB 98-150-306
			DATE 02-22-02
			DWG D98-150P

\\A:\AUTOCAD\98-150\1508-306.dwg 02/22/03 11:40:24 AM AM EST